



YOUR LONDON AIRPORT
Gatwick

Our northern runway: making best use of Gatwick

Preliminary Environmental Information Report
Appendix 8.6.2: CPRE Tranquillity Mapping
September 2021

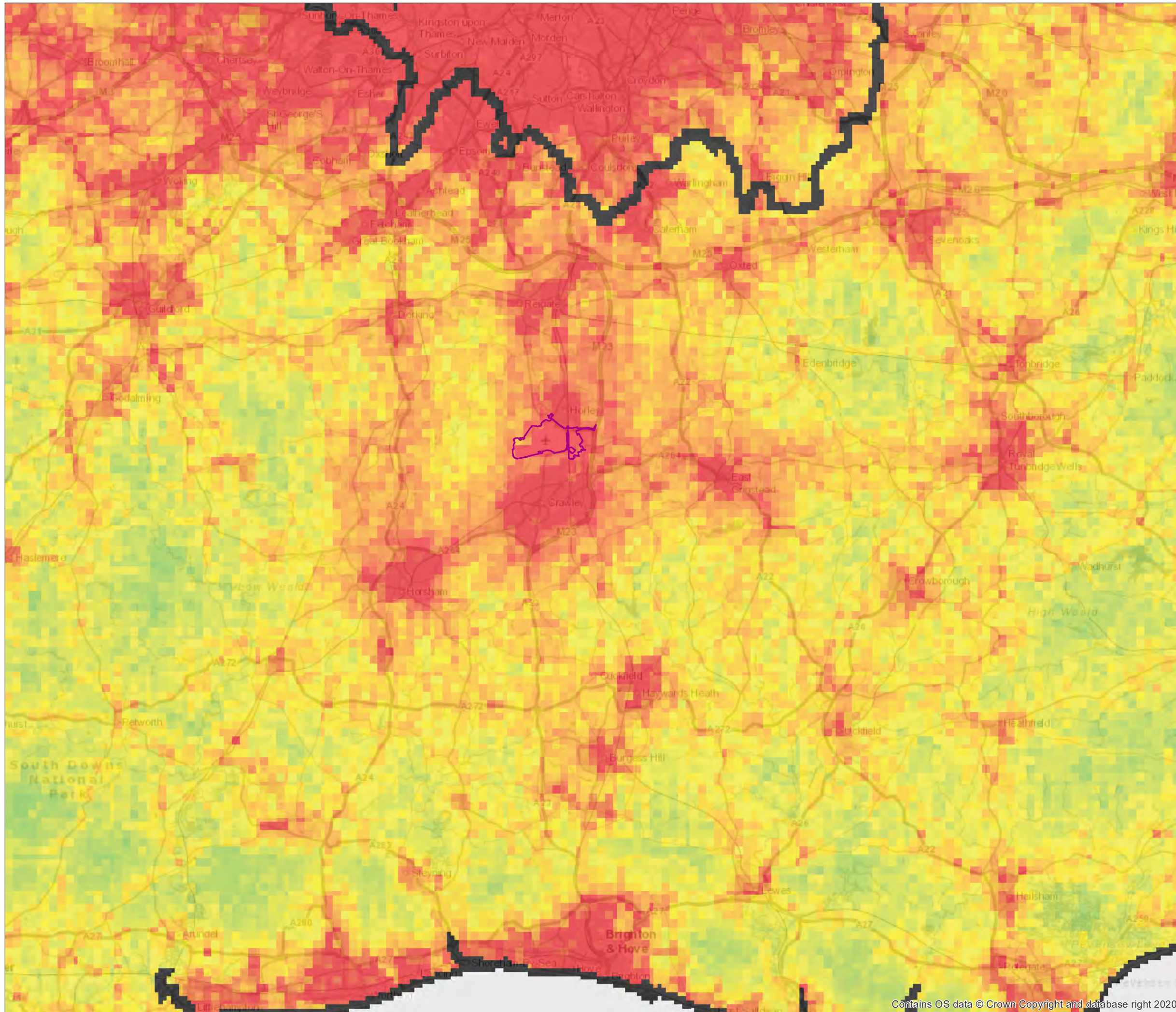
Table of Contents

1	Introduction	1
---	--------------	---

1 Introduction

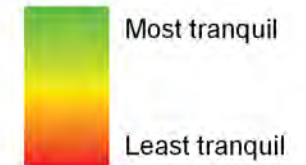
1.1 General

- 1.1.1 This document forms Appendix 8.6.2 of the Preliminary Environmental Information Report (PEIR) prepared on behalf of Gatwick Airport Limited (GAL). The PEIR presents the preliminary findings of the Environmental Impact Assessment (EIA) process for the proposal to make best use of Gatwick Airport's existing runways (referred to within this report as 'the Project'). The Project proposes alterations to the existing northern runway which, together with the lifting of the current restrictions on its use, would enable dual runway operations. The Project includes the development of a range of infrastructure and facilities which, with the alterations to the northern runway, would enable the airport passenger and aircraft operations to increase. Further details regarding the components of the Project can be found in the Chapter 5: Project Description.
- 1.1.2 This document provides the CPRE baseline tranquillity mapping for the Project study area.
- 1.1.3 Figure 1.1.1 details the baseline tranquillity mapping for the Project study area which has been sourced from Campaign to Protect Rural England.



KEY

 Project Site Boundary (PEIR)





Source:
Campaign to Protect Rural England

DOCUMENT
**Preliminary Environmental
Information Report
Appendix 8.6.2**

DRAWING TITLE
Tranquillity Map

DATE
September 2021

ORIENTATION 	DRAWING NO. FIGURE 1.1.1	REVISION For PEIR Issue
	DRAWN BY CR	PM / CHECKED BY PE

SCALE @ A3 1:250,000


Reproduced from Ordnance Survey map with the permission of Ordnance Survey on behalf of the controller of Her Majesty's Stationery Office © Crown Copyright (2019). License number 0100031673, 10001998, 100048492.

© Copyright 2019 Gatwick Airport Limited. No part of this drawing is to be reproduced without prior permission of Gatwick Airport Limited.