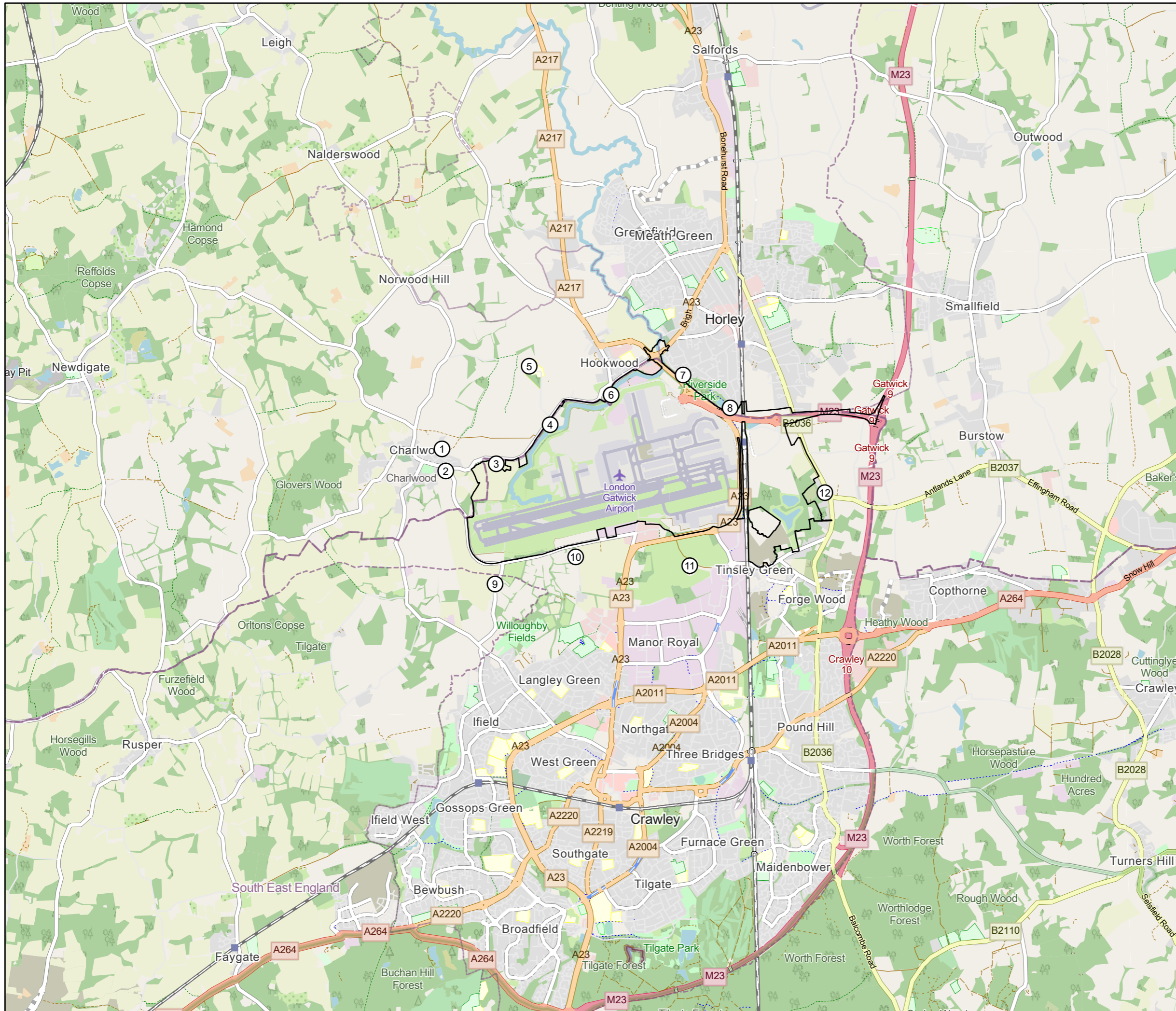


KEY

- Baseline Noise Monitoring Sites
- ▭ Project Site Boundary - PEIR

- 1 - Blue Cedars
- 2 - 3 Charlwood Road
- 3 - Brook Farm
- 4 - Bear and Bunny Nursery
- 5 - April Cottage
- 6 - Oakfield Cottage
- 7 - 103 Cheyne Walk
- 8 - 82 The Crescent
- 9 - Hyders Farm House
- 10 - Myrtle Cottage
- 11 - Rowley Farmhouse
- 12 - Trent House



DOCUMENT

PEIR

DRAWING TITLE

Baseline Noise Monitoring Sites

DATE

September 2021

ORIENTATION



DRAWING NO.

14.4.1

REVISION

For PEIR Issue

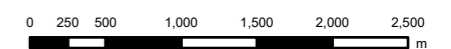
DRAWN BY

JS

PM / CHECKED BY

SM

SCALE @ A3 1:50,000



Service Layer Credits: Map data © OpenStreetMap contributors, Microsoft, Esri Community Maps contributors, Map layer by Esri  
 © Copyright 2019 Gatwick Airport Limited. No part of this drawing is to be reproduced without prior permission of Gatwick Airport Limited.  
 Spatial Reference  
 Name: British National Grid  
 Datum: OSGB 1936  
 Projection: Transverse Mercator