

Gatwick Northern Runway Project (NRP)

Overview Briefing

September 2021



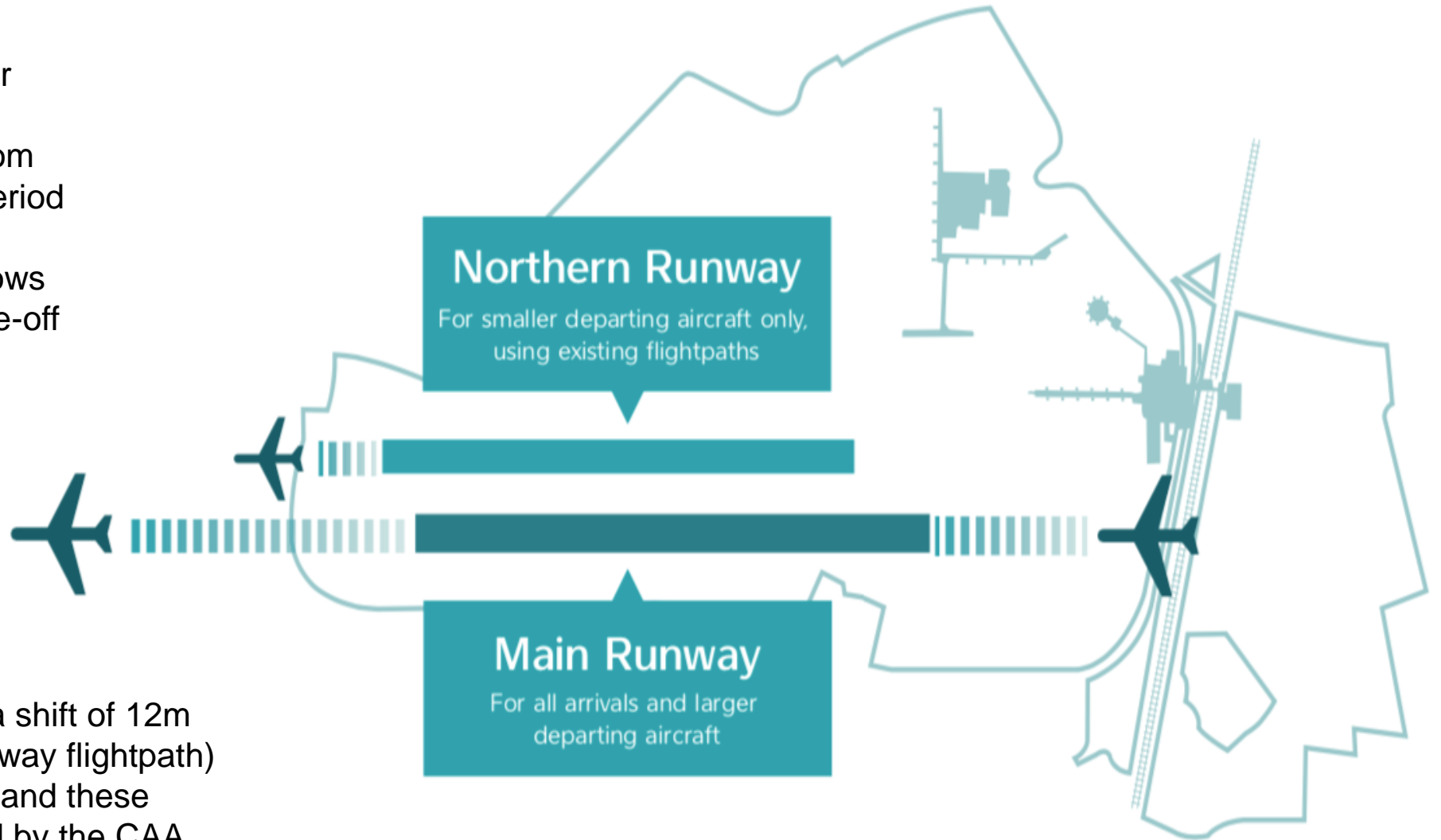
What is our Northern Runway?

- The existing Northern Runway (sometimes called the Standby or Emergency runway) is mostly used at the moment for aircraft to taxi to their gate, or when the Main Runway is closed for maintenance or other contingencies
- Bringing the Northern Runway into routine use would offer an **innovative, low-impact** way of unlocking **new capacity** and **increased resilience** from the airport's existing infrastructure



The Dual Runway Concept

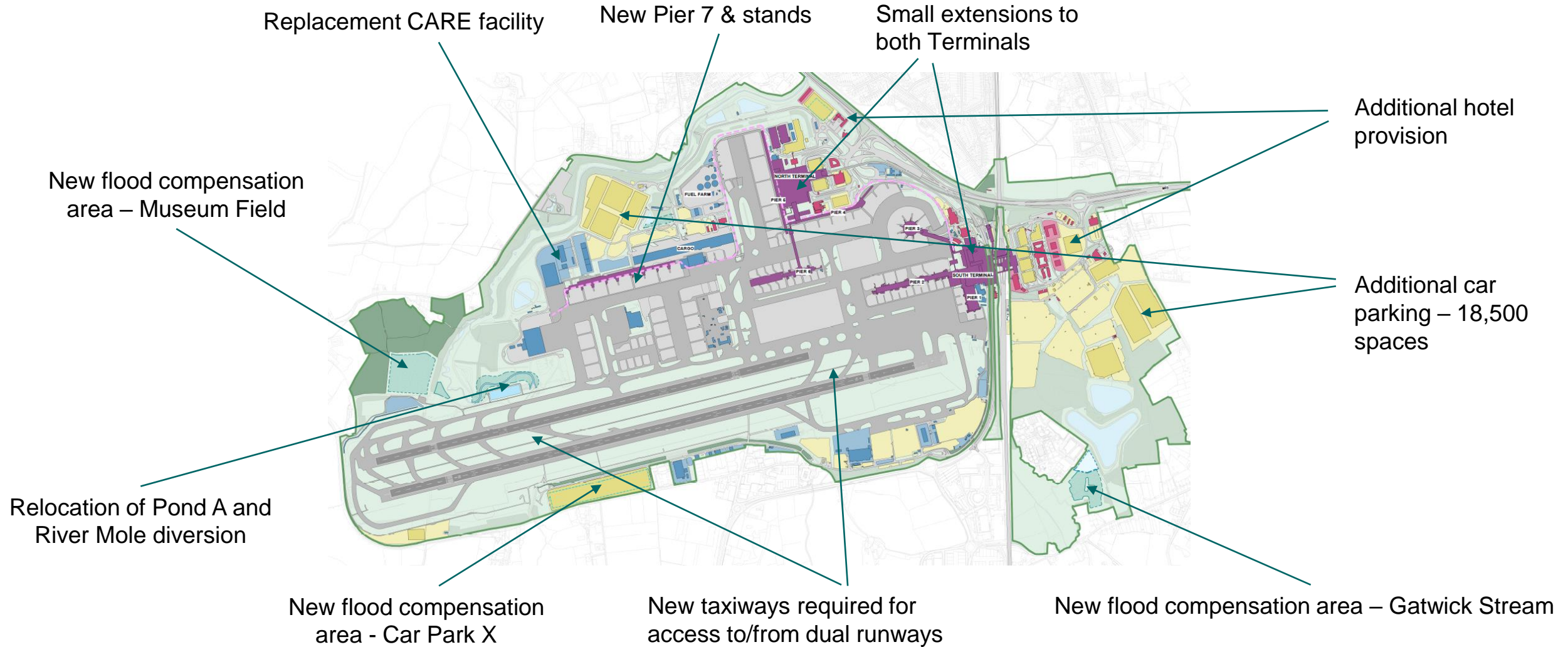
Only one runway is in use for flying at any one time –the improved capacity comes from using the necessary dead period after a landing on the main runway (while the aircraft slows down) to allow a parallel take-off on the northern runway



Minimal airspace changes (a shift of 12m to the existing Northern Runway flightpath) are required to facilitate this and these have already been approved by the CAA



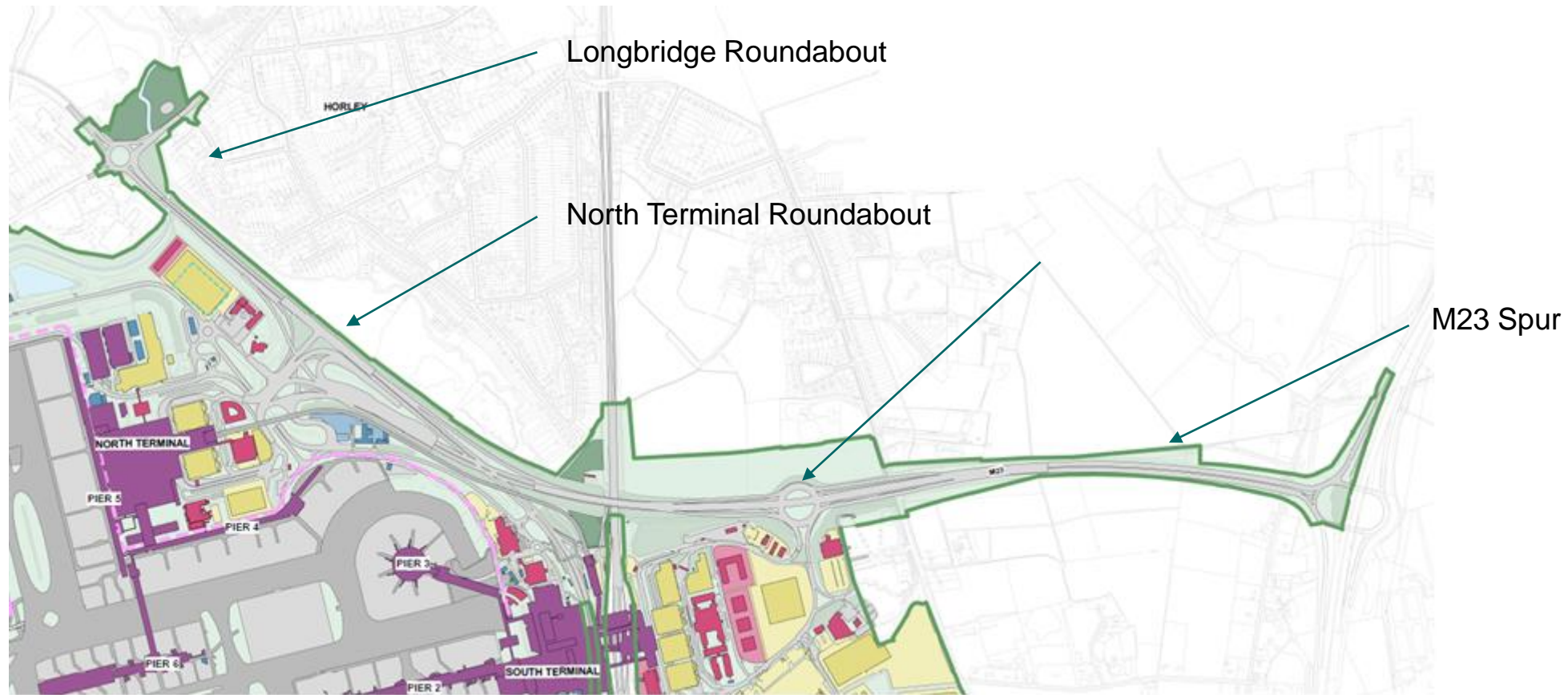
NRP DCO scope summary



ALL THIS WILL BE WITHIN THE EXISTING AIRPORT BOUNDARY



NRP DCO scope – Surface Access Improvements



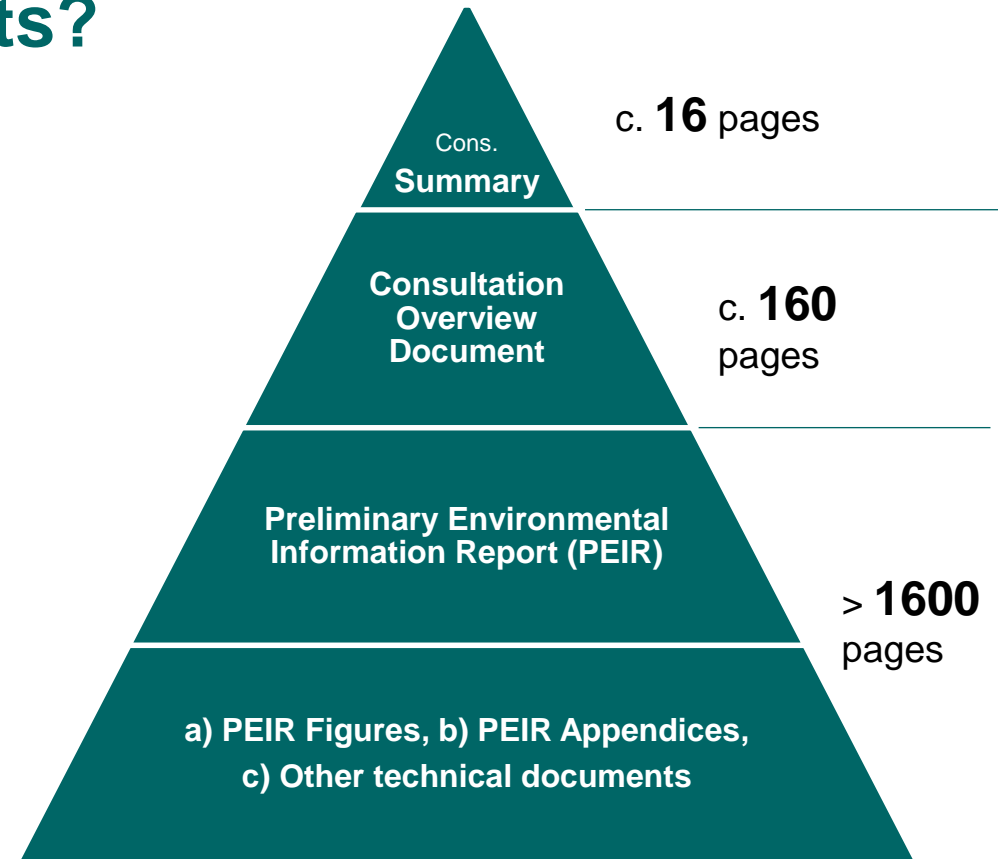
Required changes are largely within the existing highway boundary – some commercial properties may be marginally affected e.g at Longbridge Roundabout. No residential property need be acquired



What is in our consultation documents?

ENVIRONMENTAL IMPACT ASSESSMENT TOPICS

1. Noise (Air & Surface Transport)
2. Ground Noise
3. Air Quality
4. Carbon and Climate Change
5. Water Resources
6. Ecology and Nature Conservation
7. Landscape and Visual
8. Cultural Heritage
9. Ground Conditions
10. Economic impacts/benefits
11. Socio-economics
12. Health
13. Land Use and Recreation
14. Major Accidents and Disasters
15. Waste Strategy and CoCP
16. Energy Strategy
17. Construction and Buildability
18. Surface Access Design & Modelling
19. Air Traffic Forecasts
20. Housing & Community
21. Employment Land Demand

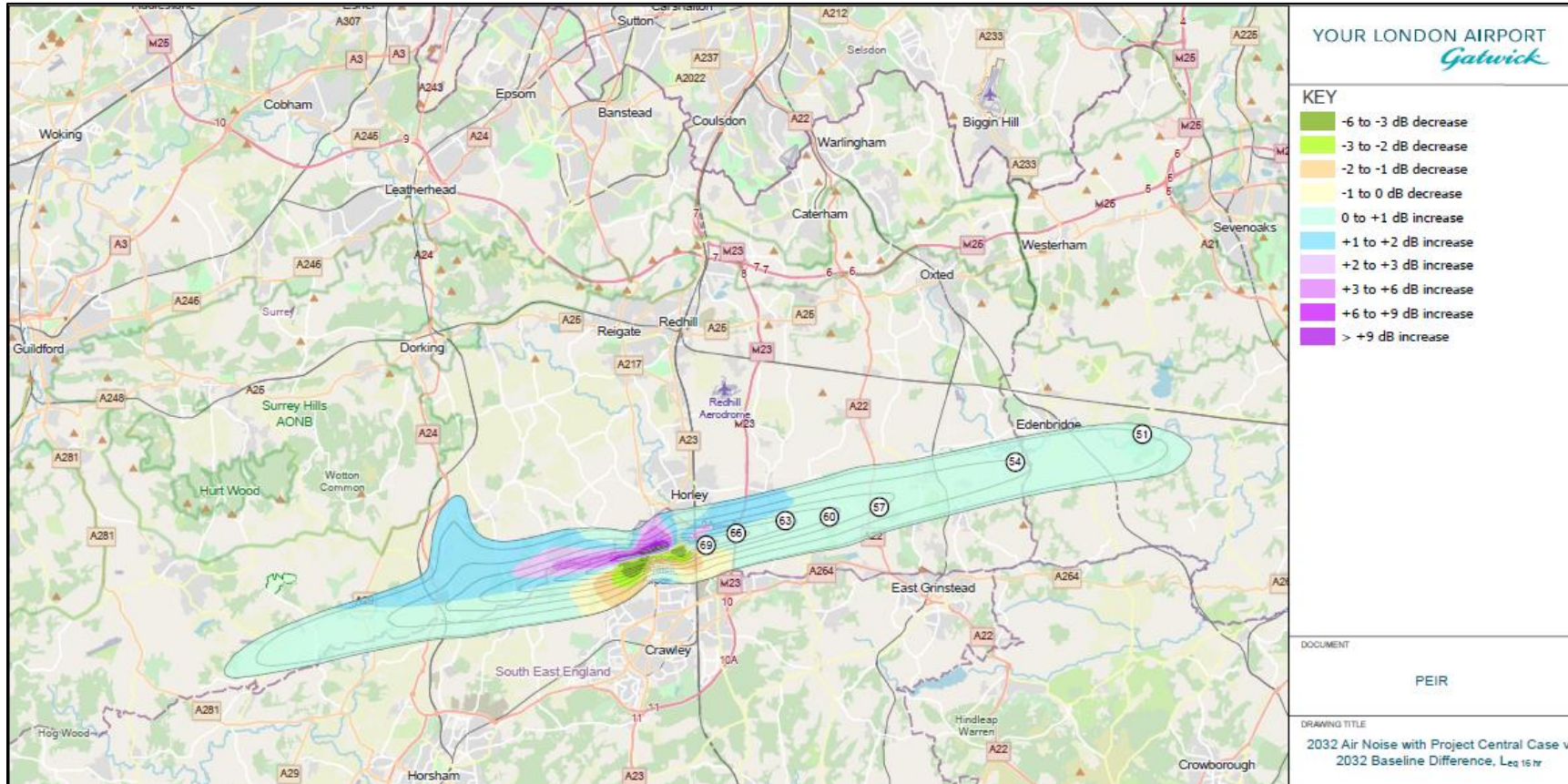


- The consultation can be accessed at any level desired
- USB sticks are provided free and contain entire content
- Summary documents are provided free



Air Noise

Air Noise 2032 Day Change



Noise Change Band L _{eq} , 16 hour Day dB	Population
-6 to -3	-
-3 to -2	<100
-2 to -1	500
-1 to 0	1,200 – 4,300
0 to +1	12,800 – 16,000
+1 to +2	4,800 – 6,500
+2 to +3	300 - 400
+3 to +6	40
>+6	0

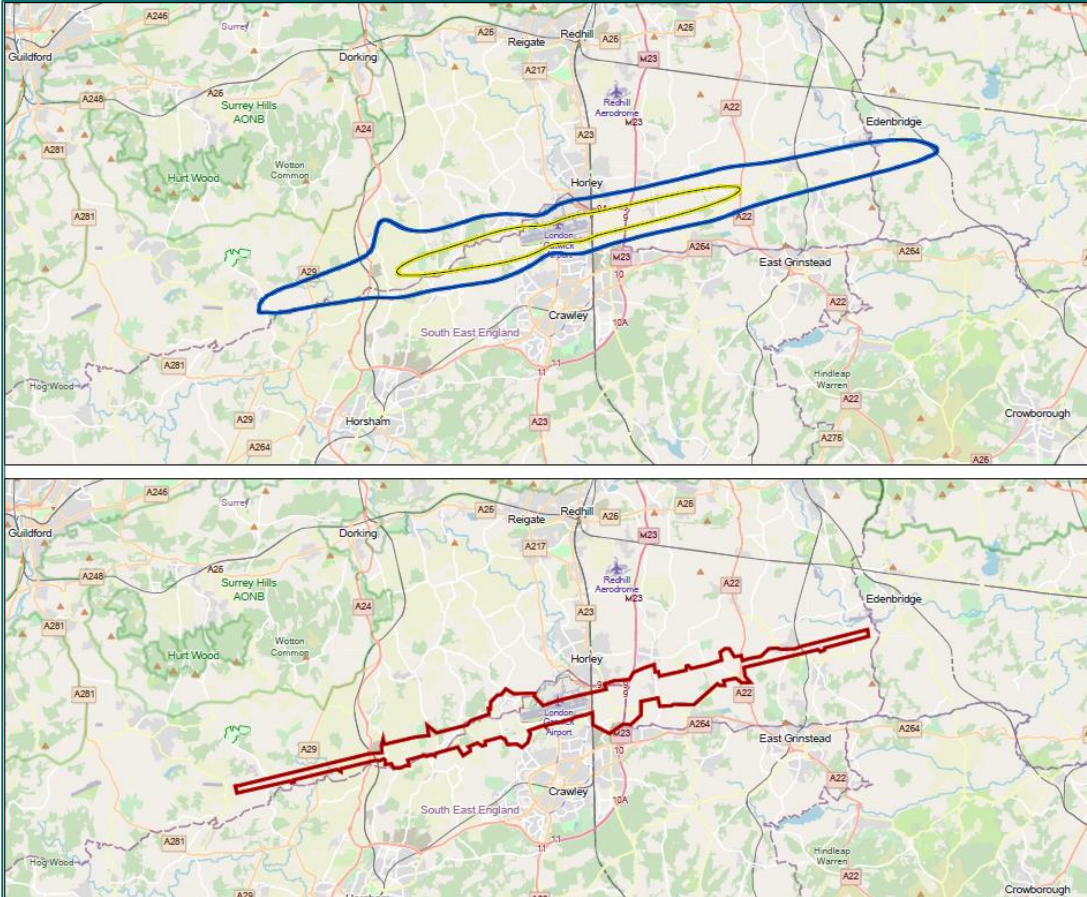
Day: Newly in SOAEL: 30-60 properties. Newly removed from SOAEL: 10 properties.

Night: 98% of people have increase of < 1dB



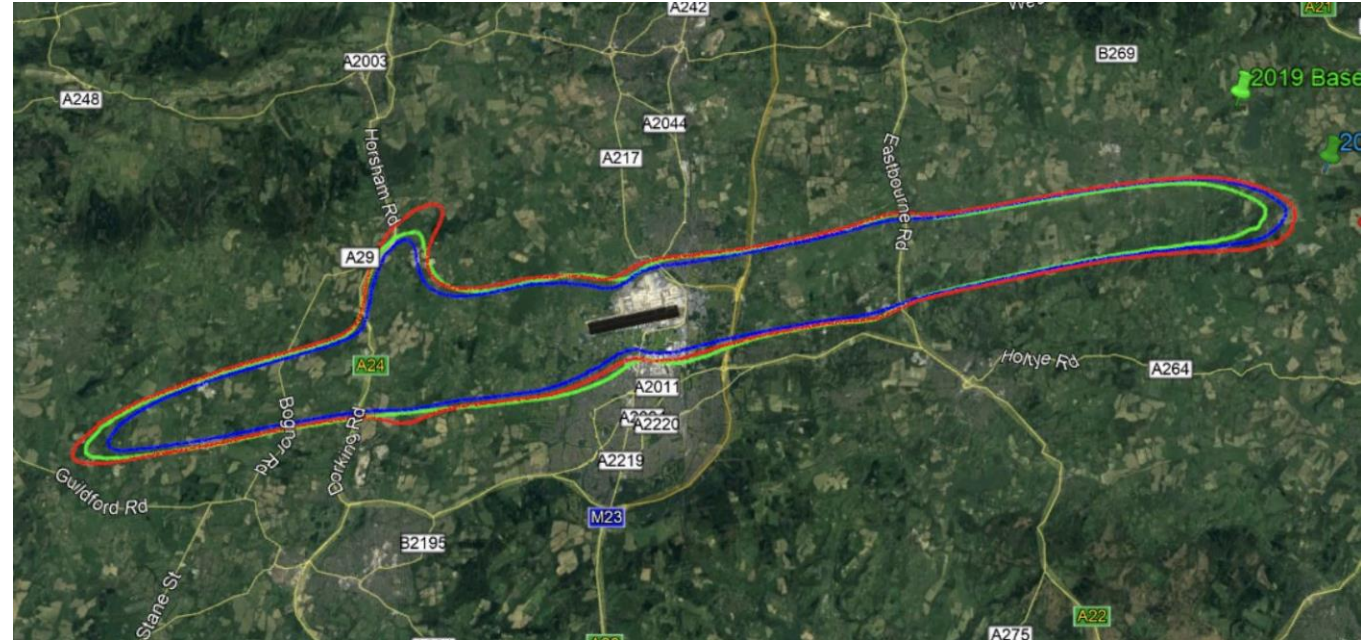
Noise Mitigation

Improved Noise Insulation Scheme



- New inner zone with full costs of meeting standards supported
- Grants in outer zone for ventilators to noise sensitive rooms
- Home Relocation Support scheme

Noise Envelope



- Gatwick propose to commit to a maximum noise envelope at the start of dual runway operations (red line) based on the 51 dB Leq contour
- This will be slightly higher than the 2019 contour (green line)
- But we will also commit to this becoming smaller than the 2019 contour as ATMs grow



Air Quality

Modelled Sensitive Receptors

11km x 10km domain

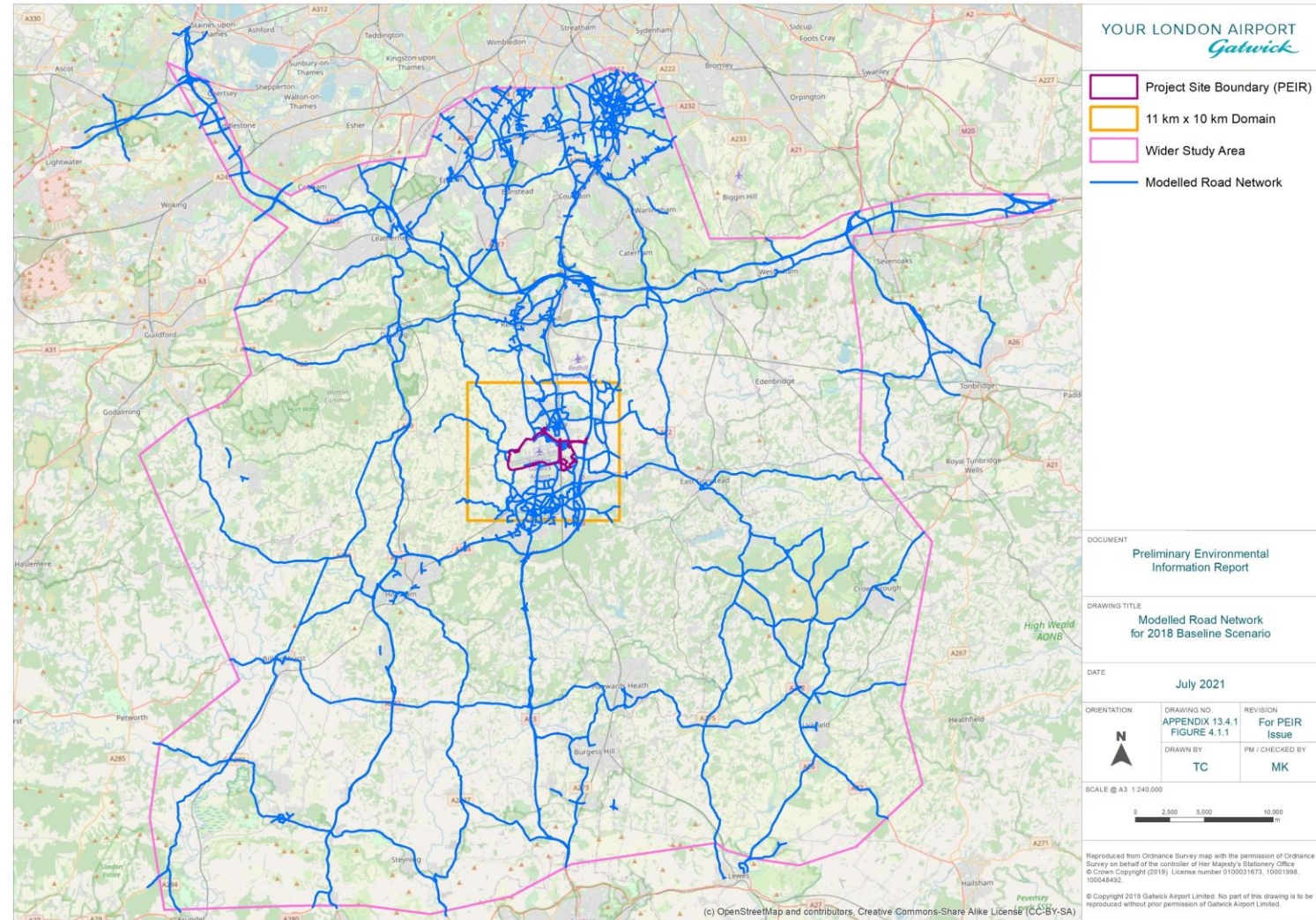
- 716 human receptors (including committed developments)
- 29 ecological sites

Wider study area

- 13 ecological sites (including 4 HRA sites: Ashdown Forest SAC/SPA, Mole Gap to Reigate Escarpment SAC, Thames Basin Heaths SPA, Thursley, Ash, Pirbright & Chobham SAC)

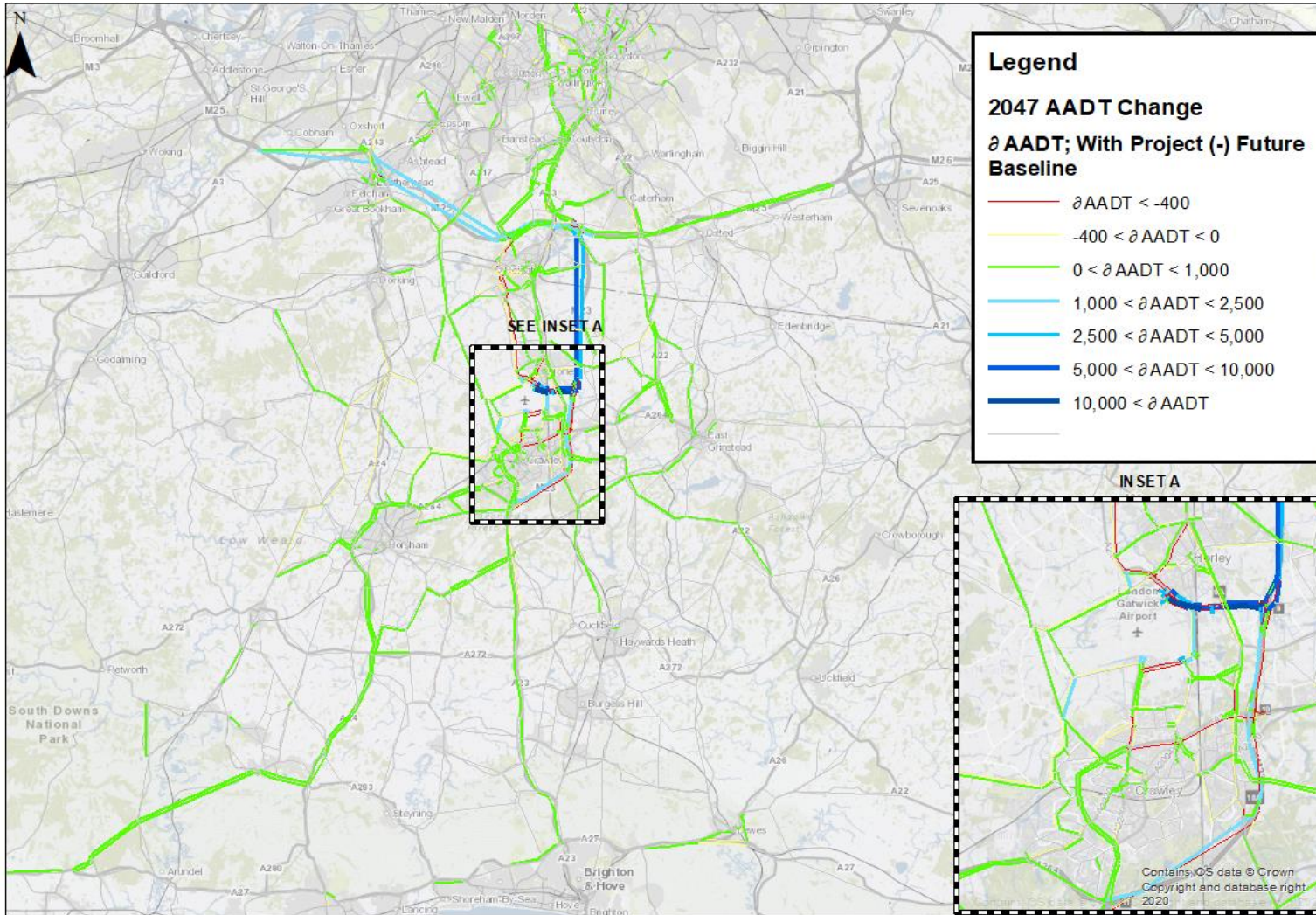
Negligible impacts at all receptors for NO₂, PM₁₀ and PM_{2.5} in 2029 and 2032.

No significant air quality effects predicted from NRP for 2029 and 2032 at human receptors or sites of ecological interest



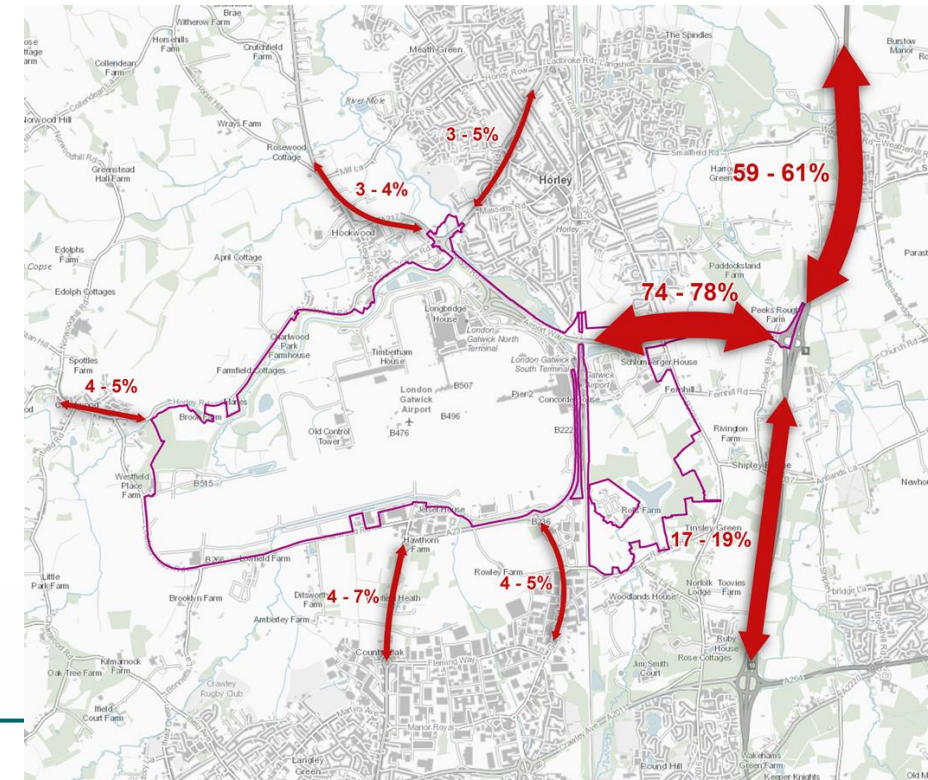
Traffic and Transport

Model Outputs – 2047 Wider Flow Impacts



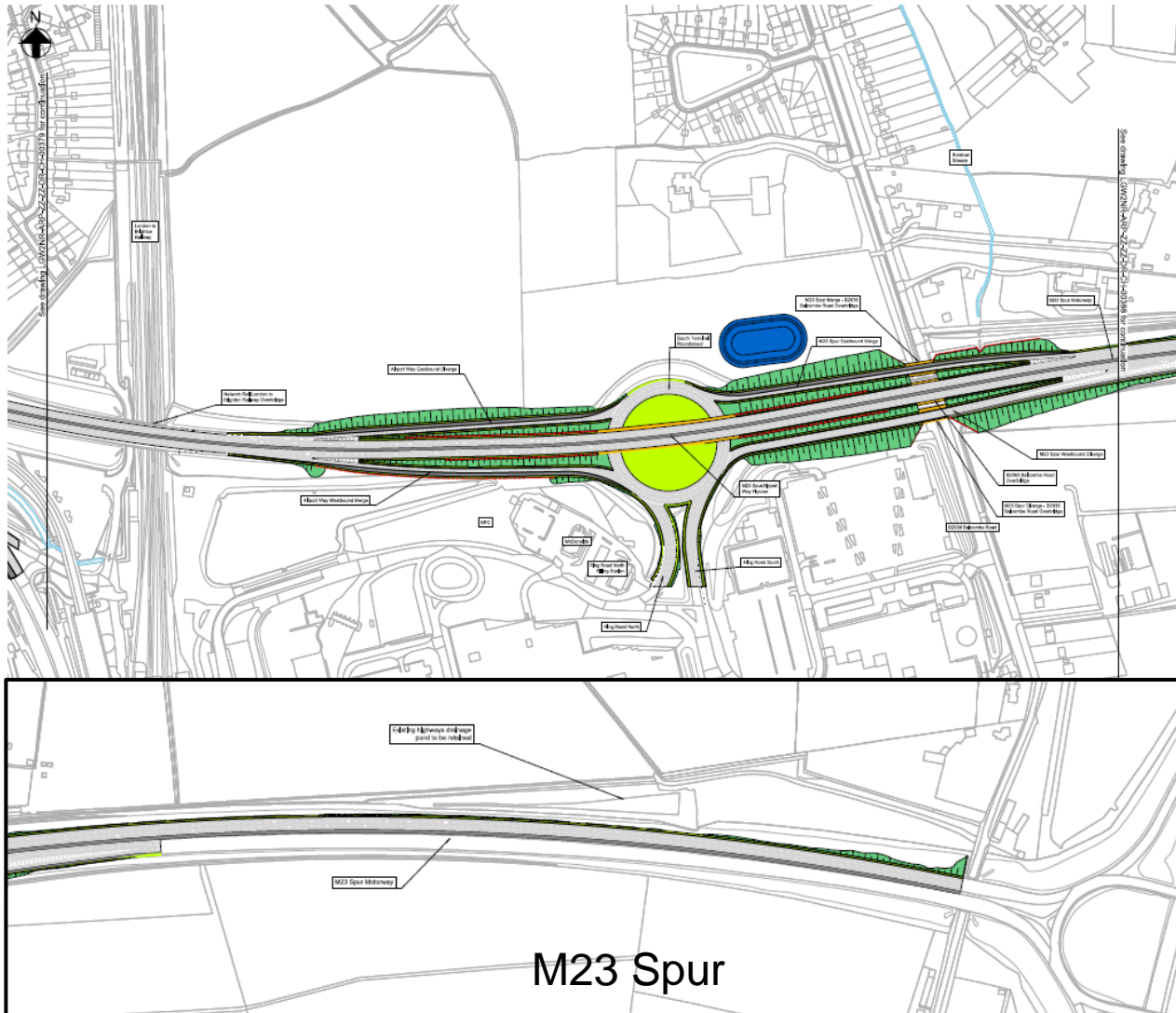
- Road traffic impacts studied in a wide area – see AQ slide – and out to 2047
- Significant effects are confined to the Strategic Road Network
- Suitable mitigation has been designed and dialogue begun with National Highways and Local Highway Authorities

Distribution of future airport traffic



Traffic and Transport – Mitigation

South Terminal Roundabout



- Flyover above the existing roundabout
- Eastbound M23 Spur converted to 3-lane all lane running
- Existing Balcombe Road overbridge to be replaced with three new structures on M23 spur
- Some additional land required for new slip roads
- At-grade alternatives don't give enough capacity
- Other grade-separated options discounted



Traffic and Transport – Mitigation

North Terminal Roundabout

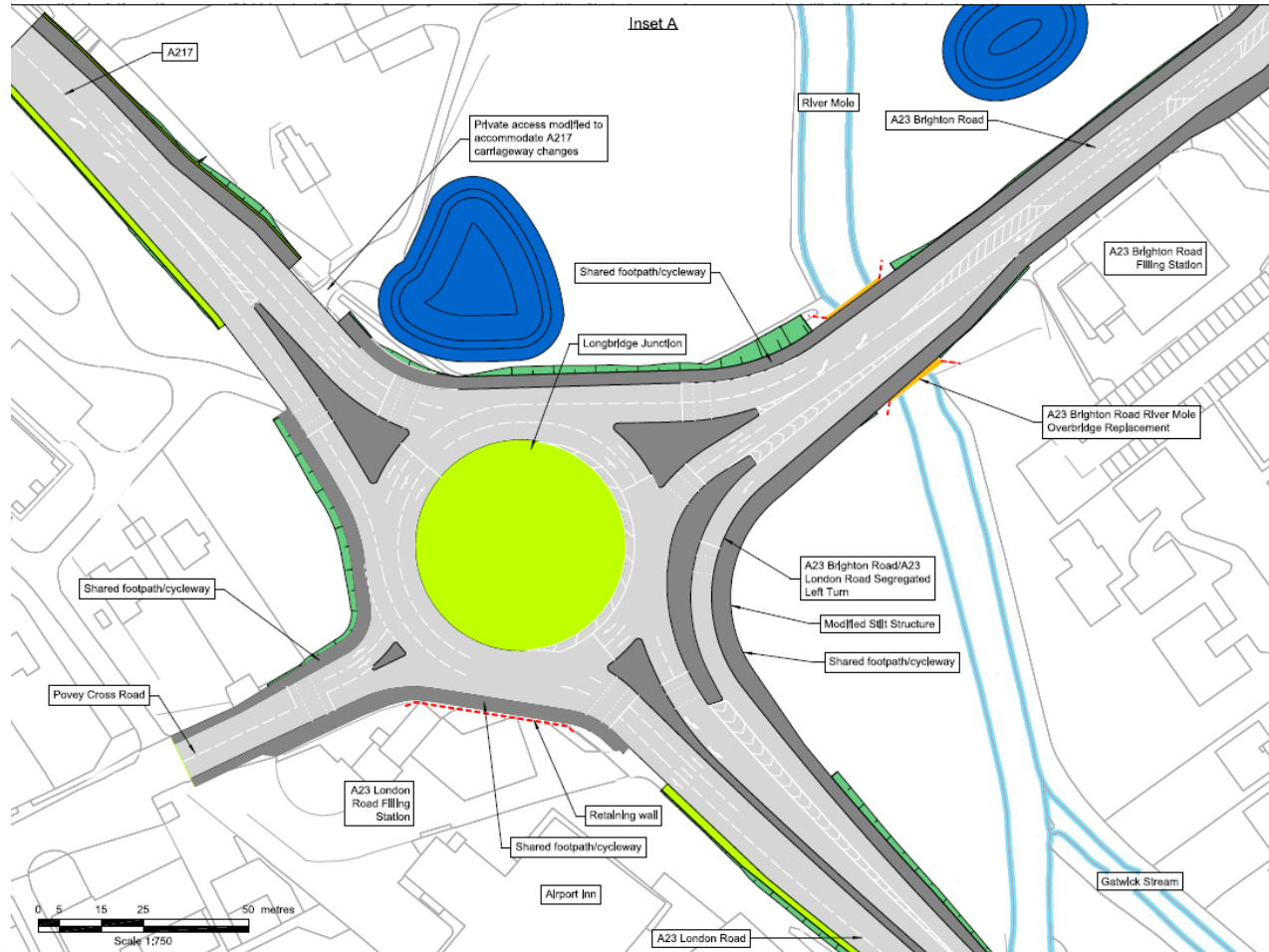


- Existing roundabout to be replaced with new layout including at-grade signal controlled junction and new flyover for Airport Way Westbound.
- New signal controlled junction on A23 London Road between Longbridge and Airport Way diverge.
- Additional upgrades include modifications to:
 - Gatwick Way/Perimeter Road North junction; and
 - A23 London Road/Perimeter Road North junction.



Traffic and Transport – Mitigation

Longbridge Roundabout



- Increased roundabout footprint, extends north.
- Provision of compliant lane widths on circulatory carriageway.
- Segregated left turn lane southbound extended and underlying stilt structure widened.
- Brighton Road bridge over River Mole will need to be replaced with wider structure.



Carbon and Climate Change

We are developing a Carbon and Climate Change Action Plan

Building on our Second Decade of Change targets and covering three key areas:

1. Airport Operations

- We are already well on track in this area
- Our plan will continue this pathway to become net zero by 2040 for airport operations (buildings, vehicles etc.)

2. Surface Access

- Our plan to reduce the emissions of staff and passengers travelling to and from the airport
- Likely to include incentives for sustainable travel, EV charging infrastructure support etc.

3. Flights

- This is by far the biggest challenge to mitigate and should only be tackled both internationally and at an industry-wide level
- We will develop measures to enable Sustainable Aviation Fuel delivery and support for hybrid-electric aircraft at the airport as they become available
- Government policy guidance expected (following the Jet Zero consultation) on the targets to be met by UK aviation to ensure that the UK meets its climate change commitments
- This will ensure that our project proposals are aligned with government commitments



Economics

National Economic Impacts – Net Present Value of the Project

	Estimated Benefit/Cost (£2010, bn)
Passenger benefits	60.1 – 78.8
Other benefits (Government, London airports, and the wider economy)	11.8 – 13.7
Total benefits	72.0 – 92.5
Impacts on airlines	(55.2 – 66.9)
Total benefits (including airlines)	16.8 – 25.6
Environmental costs	(0.9 – 3.5)
Net social benefits	13.3 – 24.7
Scheme costs (CAPEX and OPEX)	(2.7)
Net present value	10.5 – 22.0

Note: Ranges in environmental costs represent uncertainty in the monetary costs associated with air quality and GHG emissions. in benefits and impacts on airlines represent uncertainty on the minimum prices that airlines would offer. Ranges in net benefits reflect the minimum and maximum benefits the Project may generate combining the lowest total benefits and the highest environmental costs and vice versa.

**NPV of
Crossrail:
£12.3bn**

National Economic Impacts – Other (qualitatively assessed) benefits

Resilience	Faster recovery from unexpected events at Gatwick Airport Ability to accept diverted flights from other airports
Competition	More alternatives for passengers in short-haul and long-haul markets Maintaining FSC – LCC competition by providing growth space to LCC business model in the London aviation system
Freight	Increased air freight capacity at the airport (in annual ATM terms) Opportunities for more trade with niche requirements (e.g. time-sensitivity, security, special storage requirements)
FDI, trade, tourism	Connectivity increases the likelihood of FDI transactions, trade openness and tourist volume Increased knowledge flows and lower transport costs increase productivity



Estimates for incremental impact of the Project in scheme year 2038 in 2021 prices
Source: Oxera (2021)

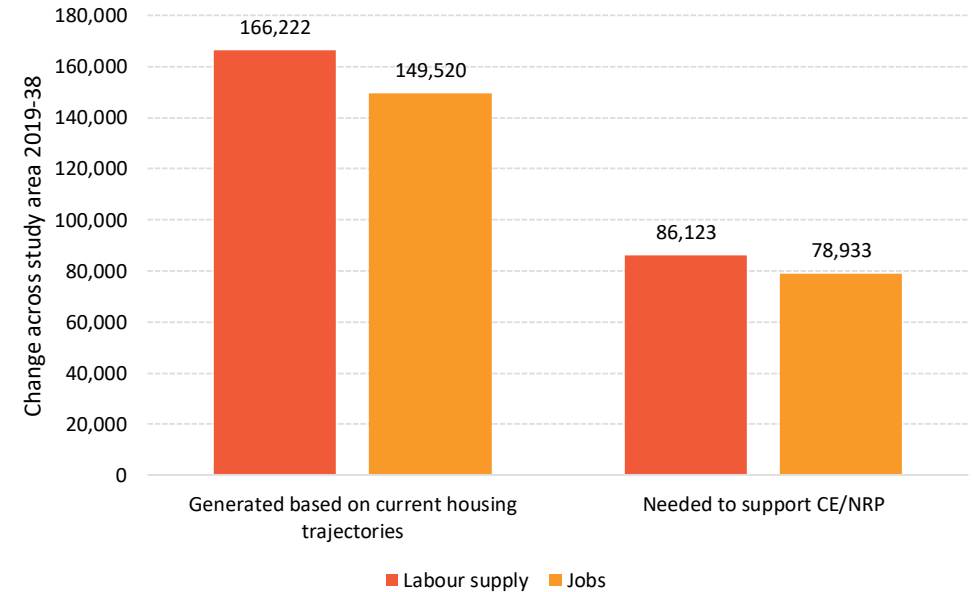


Housing and Population

Lichfield study

- Examines range of projected housing / population growth within the area from which Gatwick currently draws the majority of its workforce.
- Considers whether expected housing / population growth would be sufficient to meet anticipated employment growth **including additional employment generated by Northern Runway Project (c. 16,000 in this study area)**.
- Over period to 2038 range of between 191,000 and 320,000 homes expected to be provided under different housing prediction scenarios.
- Forecast job growth in study area (with the Project) is 79,000 which would require labour force growth of 86,000*
- **191,000 homes would be** expected to yield 166,000 growth in labour force, requiring 149,000 jobs to be created in the same area.
- Overall labour surplus in 2038 of c. 81,000
- Labour supply generated by housing / population growth will be far higher than the number of workers needed even including additional Project generated jobs.

Conclusion – The project will have no effect on increasing the number of homes which are required to be built in the Gatwick labour catchment area above those already planned by Local Authorities



Practical example: West of Ifield

West of Ifield Phase 1 could provide 3,250 homes and an associated requirement for more jobs in broadly the same timescale as our project i.e. by 2038

The project will create 3,200 jobs within this period within 4 miles of this development, creating opportunities for sustainable travel to work

Local infrastructure will grow in line with housing provision including the provision of local health services



*Takes into account unemployment and commuting patterns which means the area is likely to need more growth on workers than jobs

Consultation – virtual exhibition



YOUR LONDON AIRPORT
Gatwick



Room One

Continue



Continue To Room Two

gatwickairport.com/futureplans

Online Questionnaire

Return to Project Website

Consultation – Deposit points

DEPOSIT LOCATIONS	OPENING TIMES <i>(correct at time of publication)</i>						
	MON	TUE	WED	THU	FRI	SAT	SUN
Crowborough Community Centre, Pine Grove, Crowborough, TN6 1FE	8am - 1pm						✘
Uckfield Library, Library Way, High Street, Uckfield, TN22 1AR	10am - 1pm	10am - 4:30pm	2pm - 4:30pm	10am - 6pm	10am - 4:30pm		✘
Tunbridge Wells Library, Level 1, Royal Victoria Pl Shopping Centre, Tunbridge Wells TN1 2SS	9am - 6pm				9am - 5pm		10:30am - 4pm
Edenbridge Library, The Eden Centre, Four Elms Road, Edenbridge, TN8 6BY	9am - 1pm	9am - 5pm			1pm - 5pm	10am - 3pm	✘
Dorking Library, St Martin's Walk, Dorking, RH4 1UT	9:30am - 5.30pm					9:30am - 5pm	✘
Leatherhead Library, The Mansion, 68 Church St, Leatherhead, KT22 8DP	✘	9:30am - 5pm				✘	
Reigate and Banstead Town Hall, Castlefield Road, Reigate, RH2 0SH	8:45am - 5pm				8:45am - 4:45pm	✘	✘
Horley Library, 55-57 Russell Square, Victoria Road, Horley, RH6 7QH	✘	9:30am - 5pm				✘	
Oxted Library, 12 Gresham Road, Oxted, RH8 0BQ	✘	9.30am - 5pm				✘	
Caterham Valley Library, Stafford Rd, Caterham, CR3 6JG	✘	9.30am - 5pm				✘	
Crawley Library, Southgate Avenue, Crawley, RH10 6HG	9am - 6pm				9am - 5pm		✘
Broadfield Library, 46 Broadfield Place, Crawley, RH11 9BA	10am - 5pm				10am - 2pm		✘
Horsham Library, Lower Tanbridge Way, Horsham, RH12 1PJ	9am - 6pm				9am - 5pm		✘
Billingshurst Library, Mill Lane, Billingshurst, RH14 9JZ	10am - 5pm				10am - 2pm		✘
Mid Sussex District Council, Oaklands, Oaklands Rd, Haywards Heath, RH16 1SS	8:45am - 5:15pm				8:45am - 4:15pm	✘	✘
East Grinstead Library, 32 - 40 West St, East Grinstead, RH19 4SR	9:30am - 6pm				9:30am - 5pm		✘
Jubilee Library, Jubilee Street, Brighton, BN1 1GE	10am - 5pm					11am - 5pm	
Westdene Library, 24 Bankside, Brighton, BN1 5GN	9am - 5pm				9:30am - 5pm		11am - 5pm

Consultation – Mobile Project Office visits

MOBILE PROJECT OFFICE LOCATIONS		
DATE	TIME	LOCATION
17 Sept	9:30am - 12:30pm	Crawley, K2 Leisure Centre, Pease Pottage Hill, Crawley, RH11 9BQ
	2pm - 5pm	Horsham, The Bridges Leisure Centre, Wickhurst Lane, Broadbridge Heath, Horsham, West Sussex, RH12 3YS
23 Sept	9:30am - 12:30pm	East Grinstead, Sainsburys, Brooklands Way, East Grinstead, RH19 1DD
	2pm - 5pm	Edenbridge, Edenbridge Leisure Centre, Stangrove Park, Edenbridge, TN8 5LU
24 Sept	9:30am - 12:30pm	Horley, Horley Leisure Centre, Anderson Way, Horley, RH6 8SP
	2pm - 5pm	Lingfield, Lingfield and Dormansland Community Centre, Lingfield High St, RH7 6AB
28 Sept	9:30am - 12:30pm	Caterham, Morrisons, 28 Church Walk, Caterham, CR3 6RT
	2pm - 5pm	Oxted, Morrisons, 43 East Hill, Oxted, RH8 9AE
30 Sept	9:30am - 12:30pm	Reigate, Morrisons, 22-32 Bell Street, Reigate, RH2 7BA
	2pm - 5pm	Dorking, Dorking Sports Centre, Reigate Road, Dorking, RH4 1SN
02 Oct	9:30am - 12:30pm	Horsham, The Bridges Leisure Centre, Wickhurst Lane, Broadbridge Heath, Horsham, West Sussex, RH12 3YS
	2pm - 5pm	Crawley, Sainsburys, Crawley Avenue, Crawley RH10 8NF
05 Oct	2pm - 5pm	Capel, Capel Parish Hall, Dorking, RH5 5LD
	6pm - 8pm	Billingshurst, Billingshurst Centre, Roman Way, Billingshurst, RH14 9EW
06 Oct	9:30am - 12:30pm	Edenbridge, Frantfield, 14 Frantfield, Edenbridge TN8 5BB
	2pm - 5pm	Royal Tunbridge Wells, Sainsbury's, Linden Park Rd, Royal Tunbridge Wells, TN2 5QL

MOBILE PROJECT OFFICE LOCATIONS		
DATE	TIME	LOCATION
07 Oct	2pm - 5pm	Brighton, Asda Brighton Hollingbury Superstore, Unit 1 Crowhurst Road, off Carden Avenue Brighton, BN1 8AS
12 Oct	2pm - 5pm	Haywards Heath, Ashenground Community Centre, Southdown Close, Haywards Heath, RH16 4JR
	6pm - 8pm	Uckfield, The Uckfield Club, Bell Lane, Bellbrook Industrial Estate, Uckfield, TN22 1QL
14 Oct	9:30am-12:30pm	East Grinstead, Sainsbury's, Brooklands Way, East Grinstead, RH19 1DD
	2pm - 5pm	Redhill, Sainsbury's, London Road, Redhill, RH1 1NN
16 Oct	9:30am - 12:30pm	Burgess Hill, Market Place Shopping Centre, Burgess Hill, RH15 9NP
	2pm - 5pm	Crowborough, Croft Road Car Park, Crowborough, TN6 1DL
19 Oct	9:30am - 12:30pm	East Grinstead, Sainsbury's, Brooklands Way, East Grinstead, RH19 1DD
	2pm - 5pm	Crawley, K2 Leisure Centre, Pease Pottage Hill, Crawley, RH11 9BQ
21 Oct	2pm - 5pm	Horley, Horley Town Council, 92 Albert Road, Horley, RH6 7HZ
	6pm - 8pm	Horsham, The Bridges Leisure Centre, Wickhurst Lane, Broadbridge Heath, Horsham, West Sussex, RH12 3YS
05 Nov	9:30am - 12:30pm	Royal Tunbridge Wells, Sainsbury's, Linden Park Road, Royal Tunbridge Wells, TN2 5QL
	2pm - 5pm	Edenbridge, Frantfield, 14 Frantfield, Edenbridge, TN8 5BB
12 Nov	2pm - 5pm	Brighton, Asda Brighton Hollingbury Superstore, Unit 1 Crowhurst Road, off Carden Avenue Brighton, BN1 8AS
13 Nov	2pm - 5pm	Horley, Horley Town Council, 92 Albert Road, Horley, RH6 7HZ

- Will hand out Summary documents and USB sticks and book “Ask the Expert” appointments
- 31 visits planned currently – we are open to requests for additional visits

How can you get involved?

- **During the public consultation:-**

- By visiting the virtual consultation event on our website at gatwickairport.com/futureplans
- By visiting a deposit centre to read paper copies of the documents
- By visiting the mobile project office to pick up a consultation summary document, a response form, a USB stick or to book a “speak to the expert” call
- By attending a webinar on a particular topic: Noise, AQ, Carbon, Land, Transport, General
- By booking a “speak to the expert” slot to ask topic specific questions
- By filling in a consultation response on-line
- By filling in a paper consultation response form
- By sending an e-mail to the consultation address

- **After the DCO submission:-**

- Become an Interested Party by submitting a Relevant Representation to PINS
- By attending the Preliminary Meeting
- By attending or speaking at a public hearing



YOUR LONDON AIRPORT
Gatwick

Questions?

