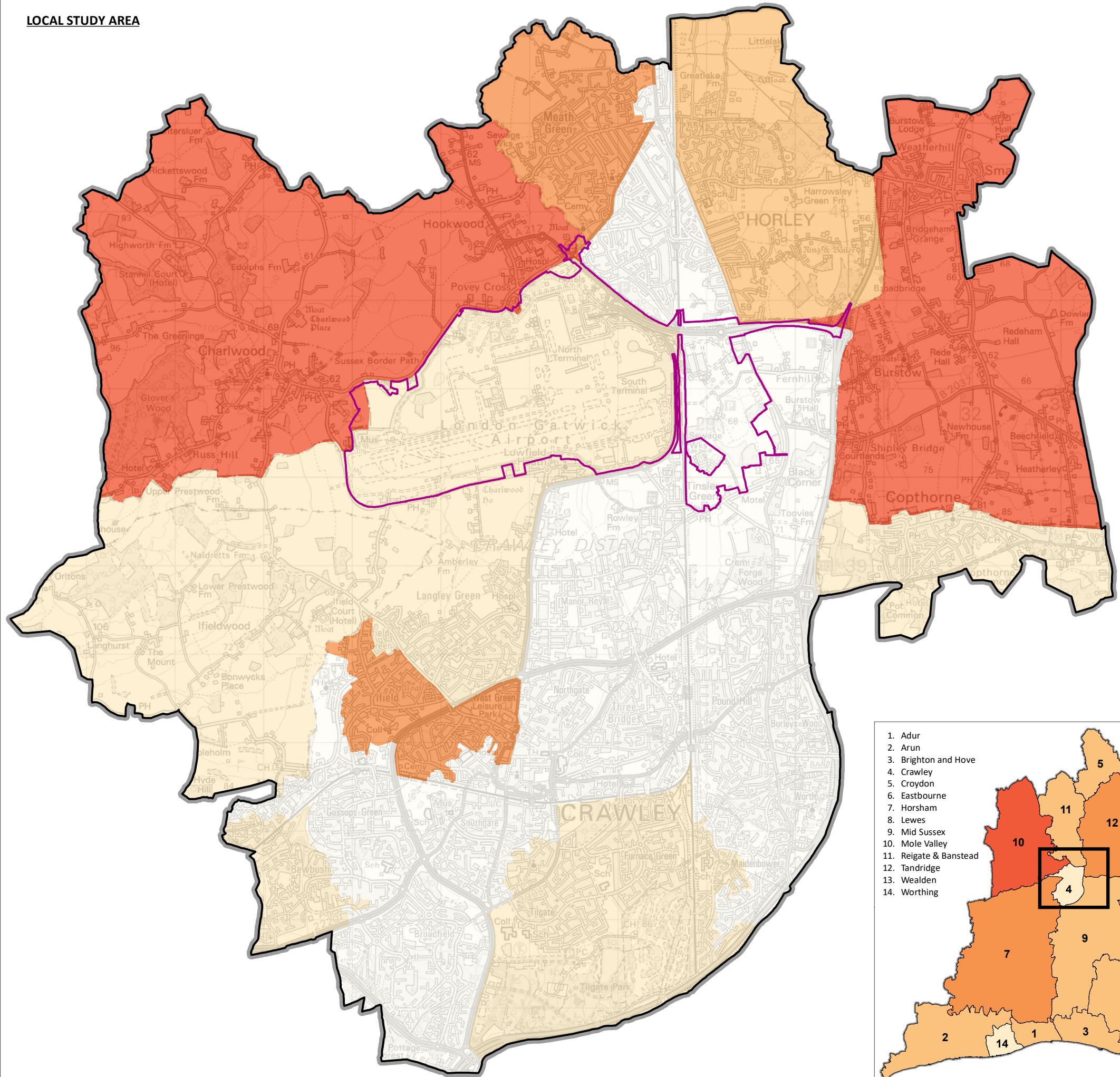




**LOCAL STUDY AREA**



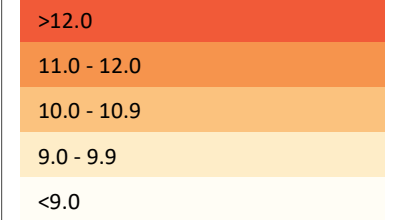
**YOUR LONDON AIRPORT**  
*Gatwick*

**KEY**

**Local Study Area Map**

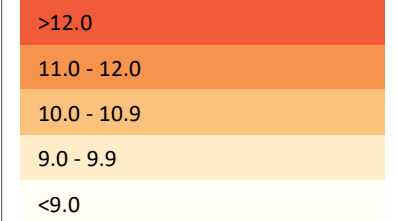
-  Project Site Boundary (PEIR)
-  Local Study Area

**Median Affordability Ratio by MSOA, 2018**



**Labour Market Area Map**

**Median Affordability Ratio by LPA, 2020**



Note: Affordability ratios for the local study area are not directly comparable with the ratios for the local authorities in the labour market area because MSOA affordability is based on net household income whereas local authority affordability is based on gross income. The publication of MSOA affordability ratios for 2018 represented an experimental publication by ONS and hence more recent annual figures are not available

**DOCUMENT**

Preliminary Environmental Information Report

**DRAWING TITLE**

Median Resident-based Affordability Ratio

**DATE**

SEPTEMBER 2021

**ORIENTATION**



**DRAWING NO.**

FIGURE 16.6.17

**REVISION**

For PEIR Issue

**DRAWN BY**

MAR

**PM / CHECKED BY**

CGJ

**SCALE @ A3 1:850,000**



Reproduced from Ordnance Survey map with the permission of Ordnance Survey on behalf of the controller of Her Majesty's Stationery Office © Crown Copyright (2019). License number 0100031673, 10001998, 100048492.

© Copyright 2019 Gatwick Airport Limited. No part of this drawing is to be reproduced without prior permission of Gatwick Airport Limited.

