

WebTrak

WebTrak, London Gatwick's online flight tracker uses active noise monitors to track noise levels of aircraft in Gatwick's airspace and show if they have infringed noise abatement procedures.

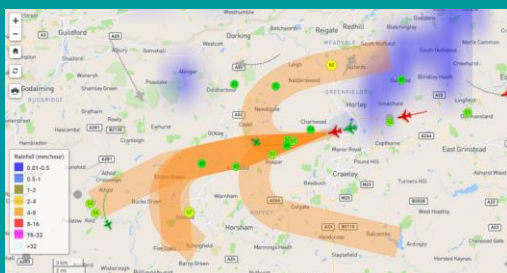
How does WebTrak work?

The system uses Air Traffic Control (ATC) radar data fed into the airport's Noise and Track Keeping (NTK) system to track each flight, and displays its flight number, aircraft type and altitude.

It also has the ability to show details of the flight profile, flight track and you can submit a complaint about a specific aircraft.

With the tracker, you can view up to three months historic data and has map overlays such as rainfall displays and Noise Preferential Routes (NPR) for departures.

What does the webpage look like?



Important to note: The system applies a short delay of 25 minutes to allow for verification and accuracy of the flight tracks shown.

You can access the WebTrak application online [here](#).

InsightFull and WebTrak

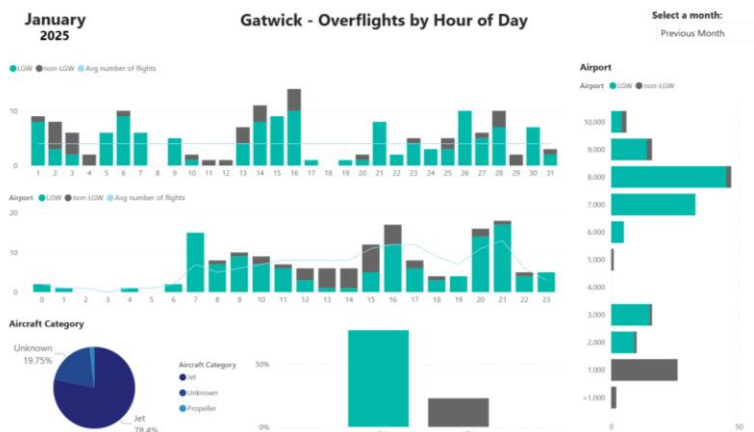
Airspace and Noise Information Portal | InsightFull

InsightFull gives interactive information about flights to and from London Gatwick and how they may impact the local community. The portal can be tailored to where users live with location-specific data, and the site is tailored around the noise-related questions Gatwick commonly gets asked.

What does InsightFull offer?

- ❖ Resources and information to help understand aircraft noise and its sources
- ❖ Noise contours and how these have improved at Gatwick
- ❖ Interactive maps to see where aircraft typically fly
- ❖ Dashboards tailored to your area, including data on overflights
- ❖ Flight paths of arriving and departing aircraft on a monthly basis
- ❖ Information on London Gatwick's monitoring system and other FAQs

What do the dashboards look like?



The dashboards are tailored for your area, based on your postcode, and contain information on the frequency of flights, the regularity of these flights and their altitudes, as well as other aspects like aircraft type and non-Gatwick related flights.

The portal also contains the **Airspace Performance Dashboard**, giving an overview of how London Gatwick and its airlines are performing in key noise abatement areas for arriving and departing aircraft. The dashboard monitors aspects such as Continuous Descent Operations (CDO) for arrivals and departure track keeping, as well as the runways in use.

You can access the Airspace and Noise Information Portal online [here](#).